

BASFORD AND BESTWOOD AREA COMMITTEE 29 MAY 2013

Title of paper:	WARD PERFORMANCE REPORTS – QUARTER 4	
Director(s)/ Corporate Director(s):	Andy Vaughan Director of Neighbourhood Services	Wards affected: Bestwood, Basford
Contact Officer(s) and contact details:	Heidi May – North Locality Manager Heidi.May@nottinghamcity.gov.uk Gursharan Singh Nijran – NDO, Basford Gursharan.Nijran@nottinghamcity.gov.uk Dale Griffin – NDO, Bestwood Dale.Griffin@nottinghamcity.gov.uk	
Other officers who have provided input:	Dave Halstead – Head of City Services Christine Oliver – Senior implementation Manager Crime and Drugs Partnership	
Relevant Council Plan theme(s):		
World Class Nottingham		✓
Work in Nottingham		✓
Safer Nottingham		✓
Neighbourhood Nottingham		✓
Family Nottingham		✓
Healthy Nottingham		✓
Leading Nottingham		
Summary of issues (including benefits to customers/service users):		
<p>The ward performance reports provide updates on key issues and themes which link back to local priorities and the strategic themes in the Nottingham Plan 2020. The reports provide summary updates on the following key themes:</p> <ul style="list-style-type: none"> • Ward priorities • Community engagement • Finance • Safer theme - Crime and anti social behaviour (ASB) • Neighbourhood theme – Cleansing and Environmental issues • Working theme - Unemployment rates • Housing • Community Protection • Fire • Health Theme – local health priorities <p><u>North Locality Board</u> This has been established now for ten months and delivers a multi agency/partnership approach to managing the locality, providing an oversight of area performance and policing priorities, performance management and problem solving of key challenges. In the north, this has included a focus on parking issues, cannabis and domestic violence. Area Chairs, or their nominated representatives are invited. Minutes will be issued to all ward councillors.</p> <p>The following brief summary by the respective Ward NDO highlights the key issues:</p> <p>Ward: Basford NDO: Gursharan Singh Nijran</p>		

The Basford ward lies just to the north-west of the city. It benefits from excellent transport links with Ring Road passing through ward and also NET line 1 running north-south through it. In all aspects, it is a ward very representative of the city with many key indicators, such as ethnicity, health, population density and unemployment being similar to the average values of the city. The ward was put on the map in 2012 by the visit of the Queen to Vernon Park in her Diamond Jubilee and the passing of the Olympic torch its heart.

What are the key successes?

We have had major successes in reducing anti-social behaviour in the Heathfield and Catchems corner area of Basford. ASB is more than 40% down on the year to March 2011. Compared to the 2010/11 baseline there has been 47% reduction in ASB. Overall crime is down 22% compared to the baseline year, and 3.59% down on last year.

Estate cleanliness and satisfaction rates amongst local citizens are high – the index score floating slightly below the neighbourhood target of 86.

Both Basford and Heathfield Community Centres continue to offer a number of services including regular youth club nights. Basford will have something to offer young people on most evenings. Locality Management and partner services have just football training at Southwark School on two evenings a week and a cycle project is due to start at the beginning of May at the Heathfield Centre.

The Highbury Community Based Fitness Gym has become a central point for a large number of young people from Highbury diverting them from the streets and encouraging healthier lifestyles and providing courses for fitness instructors in partnership with Get Active.

What are the emerging issues?

Dog fouling remains a challenge and education will play an important role in ensuring our younger generation are much more responsible. Heathfield School has worked on an exciting project to challenge norms of dog fouling and littering. This approach will be trialled at the other primary schools in the area.

Parking issues caused by the Parking Levy have resulted in many representations being made to the Council by our citizens. Working with our partners, we are making progress in addressing these issues both by enforcement and introducing additional traffic management measures.

Health inequalities also remain a big challenge and more events around this theme will be pursued throughout the summer including two days of action with health being the central theme.

Smooth transition of the Area 2 Lead Organisation will be essential to ensure continuity of a large number of the services provided for our citizens particularly through our community centres.

Reducing costs will be an important consideration in our activities. Working with colleagues and partners, we will examine ways of reducing areas requiring maintenance. One such scheme being worked up is on land near Selwyn Close.

What events / engagement have happened and what is planned?

A number of Summer events, clean ups and consultation events have taken place throughout the year. The ward forums continue to provide opportunities for dialogue and discussion. The next forum is planned for the 5th June. Two Days of Action on health issues are being planned for the summer. A number of community events are also planned.

What is the NAT focussing its work on?

NAT continues to tackle the much improved anti-social behaviour around the priority neighbourhood area, and dog fouling with regular covert operations.

Ward: Bestwood

NDO: Dale Griffin

What are the key successes?

Despite the new look Bestwood Ward NAT only officially launching in Jan 2013, partnership working within the ward has proved to be extremely successful over the last few years. Partners are very committed to the area and this is highlighted through joined-up approaches which have been embedded as a way of working. Evidence of this has been shown through the continued reduction in crime and anti-social behaviour levels.

The Bestwood Ward has now returned six years of crime reduction as detailed below:

Year	Crimes Recorded
2007/08	2,544
2008/09	2,256
2009/10	1,661
2010/11	1,390
2011/12	1,249
2012/13	1,006

This equates to a cut in crime over the six year period of 60%, or 1,538 fewer victims. In the year to date all crime in Bestwood is down 20.05%, where the division as a whole experienced a reduction of 9.5% against this measure. Bestwood Ward ranks fourth safest out of 20 wards in the City.

Similarly ASB numbers have reduced as detailed below:

Year	ASB Incidents
2007/08	1,296
2008/09	1,291
2009/10	1,174
2010/11	1,041
2011/12	990
2012/13	663

This demonstrates a reduction in ASB over the six year period by 49%. In the year to date, comparing 2012/13 to the previous year shows that Bestwood has experienced a 32.93% reduction.

Cleanliness continues to improve compared to the previous year with the data for the last year demonstrating that the neighbourhoods target of 86 was exceeded by a score of 86. Improving the visual appearance of neighbourhoods has been a priority and the NAT have focussed its attention upon two areas in Top Valley and Leen Valley. Activities have included a blitz day, environmental works and a commitment to additional resources. A key success in one of these areas was the installation of a CCTV camera which has resulted in a reduction of crime and ASB.

Top Valley, Bestwood and Bestwood Park have all achieved 3 star ratings from the Tenant Service Inspectors in 2012/13.

What are the emerging issues?

Unemployment remains to be a priority with Bestwood being ranked 3rd out of 20 wards for the highest rates of Job Seekers Allowance claimants. The NAT will continue to promote citywide initiatives within the ward as well as supporting local activities through working with local colleges and employment advisors to improve employment opportunities.

The NAT have also identified an increasing number of families requiring urgent support such as no money or food. The NAT will work with local support services to support local residents with the Welfare Reform changes.

What events / engagement have happened and what is planned?

A successful 'Have a Go' day was held in February on the new Southglade Park Multi-Use Games Area (MUGA) equipment. Members of the community were invited to get involved in free activities and learn how to use the new equipment. The equipment proved to be very popular and was used by a range of community members.

Bestwood Community Matters took place on 13 March 2013 with over 20 participants. This is a forum for local community / voluntary groups and volunteers working within the Bestwood Area. This event focused upon how we could support our residents in these challenging times with speakers from Welfare Rights, TravelRight, Nottingham Energy Partnership and Bestwood Advice Centre.

A Welfare Reform Advice drop-in session was held in March. Local residents that were likely to be impacted by the forthcoming changes were invited to the event. Approximately 120 local residents attended and supported by advisors from Bestwood Advice Centre and Nottingham City Homes.

A Big Wood School day of action took place on 25th April where 150 pupils from year 7 participated in a number of community activities throughout the day in the Bestwood Ward. The aim of the day is to encourage pupils to take pride and ownership of their local community. Activities included 6 Ward Walks, environmental activities on Churchfield Plantation, intergenerational work at Crossfields Sheltered Housing Complex and Cherry Trees Residential Home, team building exercises with the Fire Service and a year 9 careers day.

What is the NAT focussing its work on?

As the Bestwood Ward NAT is still in its developmental stage they will be focusing upon how they engage and consult local residents to ensure that the Ward Priorities are regularly reviewed and reflect local need.

Historically Bestwood has been a secondary-fire hotspot; therefore this Spring partners will be undertaking a problem-solving approach to reduce the likely occurrence of such fires.

The NAT will be reviewing its neighbourhood priority using an intelligence-led approach. They will also be reviewing which ASB hotspots require a focus upon to improve the visual appearance.

Recommendation(s):

1	To note the key information from the Ward Performance Reports for quarter 4, 2012/13.
---	---

1 BACKGROUND

1.1 Neighbourhood Working has been important for a number of years in Nottingham as a

means of engaging better with citizens and to drive forward service improvement.

- 1.2 The Nottingham Plan has a goal that 'public service delivery will be better integrated and appropriately devolved, ensuring more accessible and responsive services for all and giving residents more control over what happens in their neighbourhoods'; the Ward Performance reports help to support this.
- 1.3 The Ward Performance Reports captures work at a local level to support the Nottingham Plan; it is a short summary of key updates on priorities and issues in the ward. More detailed implementation plans sit behind the report such as the Ward Action Plan, Neighbourhood Action Team's Action Log, Crime Drug Partnership (CDP) plans and other partner's implementation plans.
- 1.4 The Ward Performance Reports are co-ordinated by Neighbourhood Development Officers every quarter, with the data analysis undertaken by the CDP.

2 REASONS FOR RECOMMENDATIONS (INCLUDING OUTCOMES OF CONSULTATION)

- 2.1 Ward performance reports provide a descriptive and statistical picture of what is happening at a ward level and invite community representatives to comment, debate, and challenge and identify how they can add value to improve their neighbourhoods.
- 2.2 Ward performance reports also monitor progress in the wards and act as a catalyst for debate about the key performance issues impacting upon the ward on a quarterly basis.

3 OTHER OPTIONS CONSIDERED IN MAKING RECOMMENDATIONS

- 3.1 None

4 FINANCIAL IMPLICATIONS (INCLUDING VALUE FOR MONEY)

- 4.1 None

5 RISK MANAGEMENT ISSUES (INCLUDING LEGAL IMPLICATIONS, CRIME AND DISORDER ACT IMPLICATIONS AND EQUALITY AND DIVERSITY IMPLICATIONS)

- 5.1 None

6 EQUALITY IMPACT ASSESSMENT

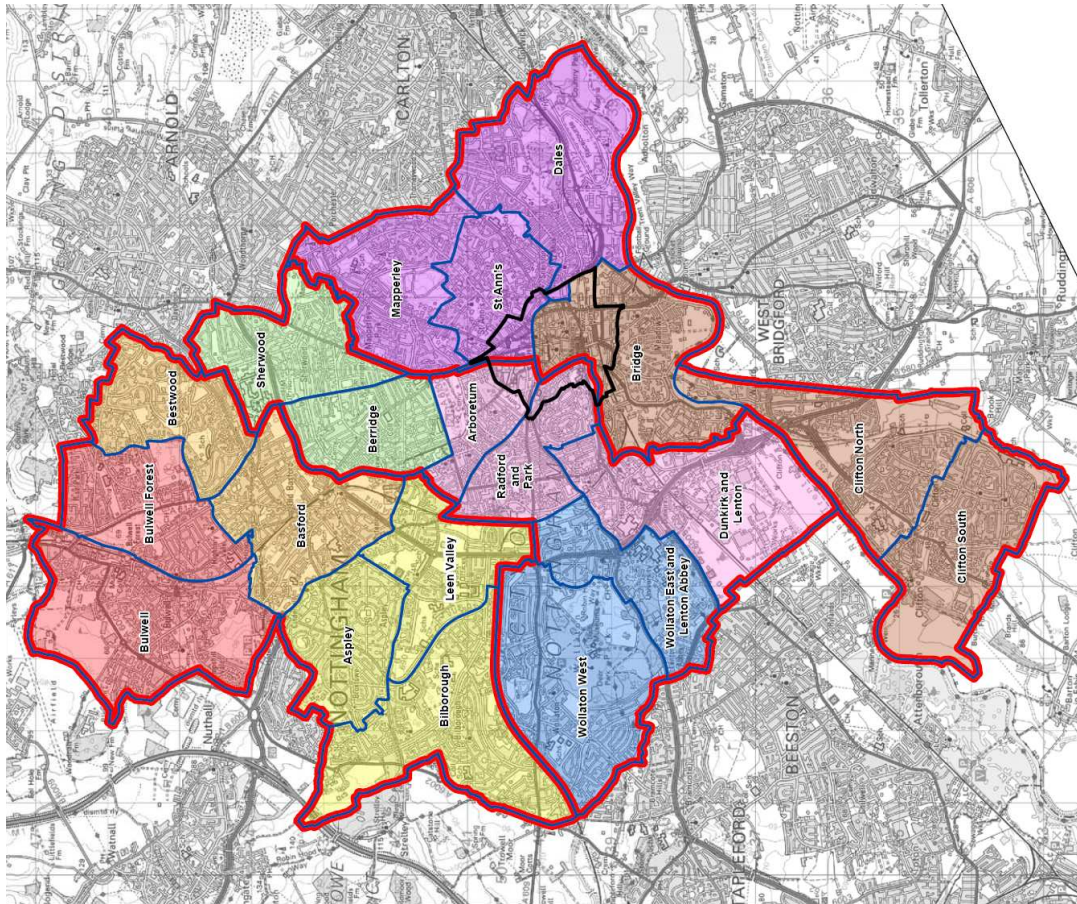
- 6.1 Equality Impact Assessment not needed (report does not contain proposals or financial decisions)

7 LIST OF BACKGROUND PAPERS OTHER THAN PUBLISHED WORKS OR THOSE DISCLOSING CONFIDENTIAL OR EXEMPT INFORMATION

- 7.1 Neighbourhood Working Framework 2012 CLT report

8 PUBLISHED DOCUMENTS REFERRED TO IN COMPILING THIS REPORT

- 8.1 None



Basford

Area Committee Executive Summary

Unofficial March 2013 Data

Ward priorities

Theme	Priorities	Key Actions	Outcome (Methods of evaluation)	Lead
Safer	<ul style="list-style-type: none"> To reduce anti-social behaviour in the neighbourhood priority area. 	<p>Increased high visibility patrols in the priority area with reassurance engagement with citizens in the area.</p> <p>Increase take up of ALERT.</p> <p>To set up diversionary football sessions at Southwark School through spring and summer.</p> <p>Engage with young people from priority area in a programme of physical activity at Highbury Gym and address substance misuse and healthy eating.</p>	<p>Reduced complaints and calls from the priority area.</p> <p>Target to have 20% of Basford households by March 2014.</p> <p>Young people in the area attracted to diversionary activities.</p>	<p>Police & Community Protection</p> <p>Police & Community Protection</p> <p>NM</p> <p>Family Community Team</p>
Neighbourhoods	<ul style="list-style-type: none"> To reduce dog fouling 	<p>NAT to target problem areas using evidence from City Services and information from residents / TRAs / and colleagues.</p> <p>Dog fouling operations to be carried out and including early morning patrols and use of CCTV.</p> <p>Educational project at Heathfield School to produce</p>	<p>Map to highlight problem area.</p> <p>Number of FPN to be recorded. Reduction in complaints about dog fouling.</p> <p>Winning design to be made</p>	<p>City Services</p> <p>Community Protection</p> <p>City</p>

	<ul style="list-style-type: none"> ▪ Reduce empty vacant spaces 	<p>reports on the issue. Students to raise awareness in the community. Anti fouling signs to be designed.</p> <p>There are a number of small plots of land that attract fly-tipping and graffiti. These areas can be a drain on resources during clean up operations. Bring these areas into use by investigating re-allocation of land to adjoining properties.</p>	<p>up into signs and used on the Heathfield estate.</p> <p>Identify a suitable site and bring partners together into a working party to explore ways of bring site back into use.</p>	<p>Services and NM.</p> <p>NM</p>
<p>Families</p>	<ul style="list-style-type: none"> ▪ Activities for Young People ▪ Develop a local youth Forum 	<p>Provision of activities for young people on at least 4 nights a week in the Basford ward. Deliver weekly Youth and Play session at Basford Community Centre.</p> <p>To empower young people in the area and encourage young people to take ownership of their community. Encourage volunteering form young people.</p>	<p>Increase in numbers of young people participating in positive activities.</p> <p>Monitor numbers young people attending forums and other ward based events.</p>	<p>Family Community Team</p> <p>Family Community Team</p>
<p>Health</p>	<ul style="list-style-type: none"> ▪ Healthy eating on a budget 	<p>Healthy lifestyles and healthy eating through cooking activities at Children's Centre.</p> <p>Ridewise to work on a number of projects in the ward to encourage healthier way of travelling such as walking and cycling. As part of this we will engage with Ellis Guilford School to encourage healthier options for travelling to school.</p> <p>Day of Action on Getting Active in partnership with partners to take place in Spring. This will involve</p>	<p>Levels of childhood obesity</p> <p>Number of students taking up cycling.</p> <p>To be delivered by end of May 2013.</p>	<p>Family Community Team</p> <p>Ridewise/ NM</p> <p>Health teams.</p>

Working	<ul style="list-style-type: none"> ▪ To raise awareness of job opportunities and provide support to get people into employment. 	<p>healthy eating, physical activities and workshops</p>	<p>To contribute to citywide targets</p> <p>Reduction in unemployment.</p>	Economic Development
	<p>Promote citywide initiatives such as:</p> <ol style="list-style-type: none"> 1) Nottingham Jobs Fund 2) Employer Hub 3) Apprenticeship Hub 4) Local Community Jobs fairs 			

Community Engagement

Events Delivered

Event	Lead Partners	Date/Time	Venue
Budget Consultation/Ward Forum	Locality Management	6 February	Southwark School
Parking Issues Public Meeting	Traffic Management	6 March	The Mill

Future Events and Activities Planned

Event	Lead Partners	Date/Time	Venue
Welfare Reform Drop-in Session	Welfare Advice	30 April, 2-6:00pm	Basford CC
Ward Forum	Locality Management	5 June, 6-8:00pm	Whitemoor School
Vernon Park Life	Locality Management	27 July, 3-8:00pm	Vernon Park
Highbury Vale Summer Fun Day	Highbury Vale TRA	3 August, 12-3:00pm	Brooklyn Park

Community Engagement

Ward Walks

Area/Estate	Date/Time	Meeting Place
Heathfield Estate	27 February	Heathfield School
Greenwich Ave/Bagnall Road	21 March	Bagnall Road/Mill Street
Riber Crescent	16 May, 10:00-12:00	Riber Crescent/Hucknall Road
Britannia Avenue Estate	20 June, 17:00-19:00	Britannia Ave/Arnold Rd

Community Meetings

Event	Date	Venue
Rosegay TRA	14 Jan, 11 Feb, 11 Mar 2013	Southwark School
Highbury Vale TRA	5 Feb, 5 Mar, 2 Apr 2013	McGuinness Centre
Basford CA	5 March 2013	Basford CC
Heathfield CA	Weekly through Jan, Feb 2013	Heathfield CC
SALTAR	23 Jan, 27 Feb, 13 Mar 2013	The Mill
Friends of Vernon Park	21 Feb, 21 Mar 2013	Vernon Park Pavilion

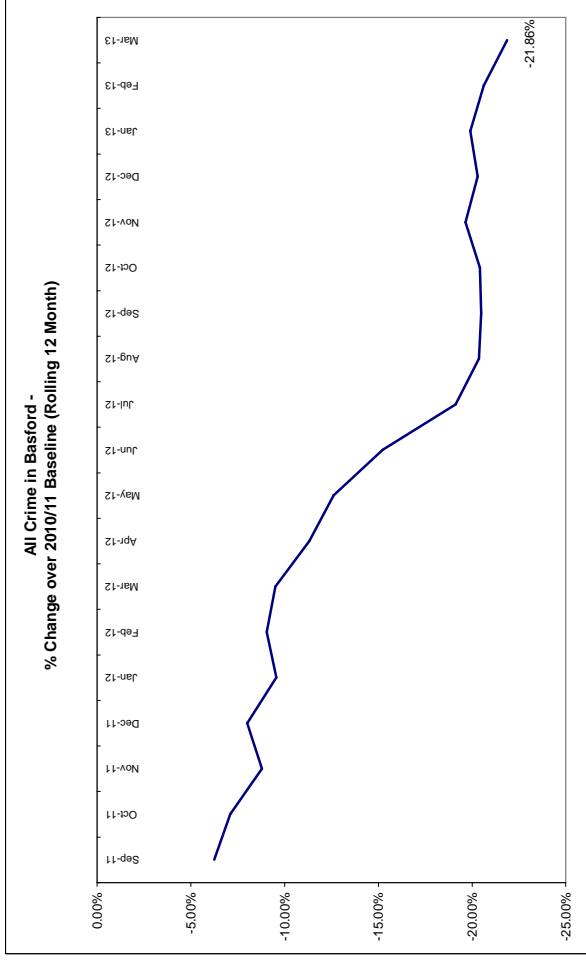
Finance

Ward Councillor Budgets	
Total Amount allocated this period	£282
Budget Remaining unallocated (inc. of 2012-13 allocation)	£18,675

Area Capital Fund	
Total Amount allocated this period	£0
Budget Remaining unallocated (inc. of 2012-13 allocation)	£24,435

Others – Section 106, NCH Environmentals	
None this period	

Crime

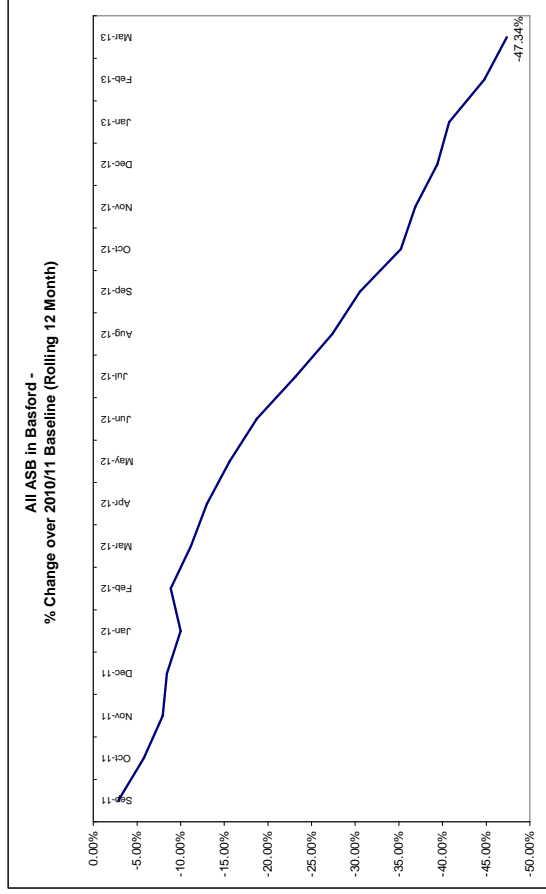


*Refers to March 2013 compared to March 2012

- The above baseline graph compares the *rolling* 12 month total of crime in Basford to a *fixed* 12 month 2010/11 baseline. The graph shows that the current 12 month total is showing a reduction of 21.86% against the baseline.
- In March 2013 there was a reduction of 15.45% (19 crimes, see above RAG rating) compared to March 2012.
- Year to date (compared to the corresponding period last year) all crime in Basford is down 13.59%.

Unofficial data

All ASB



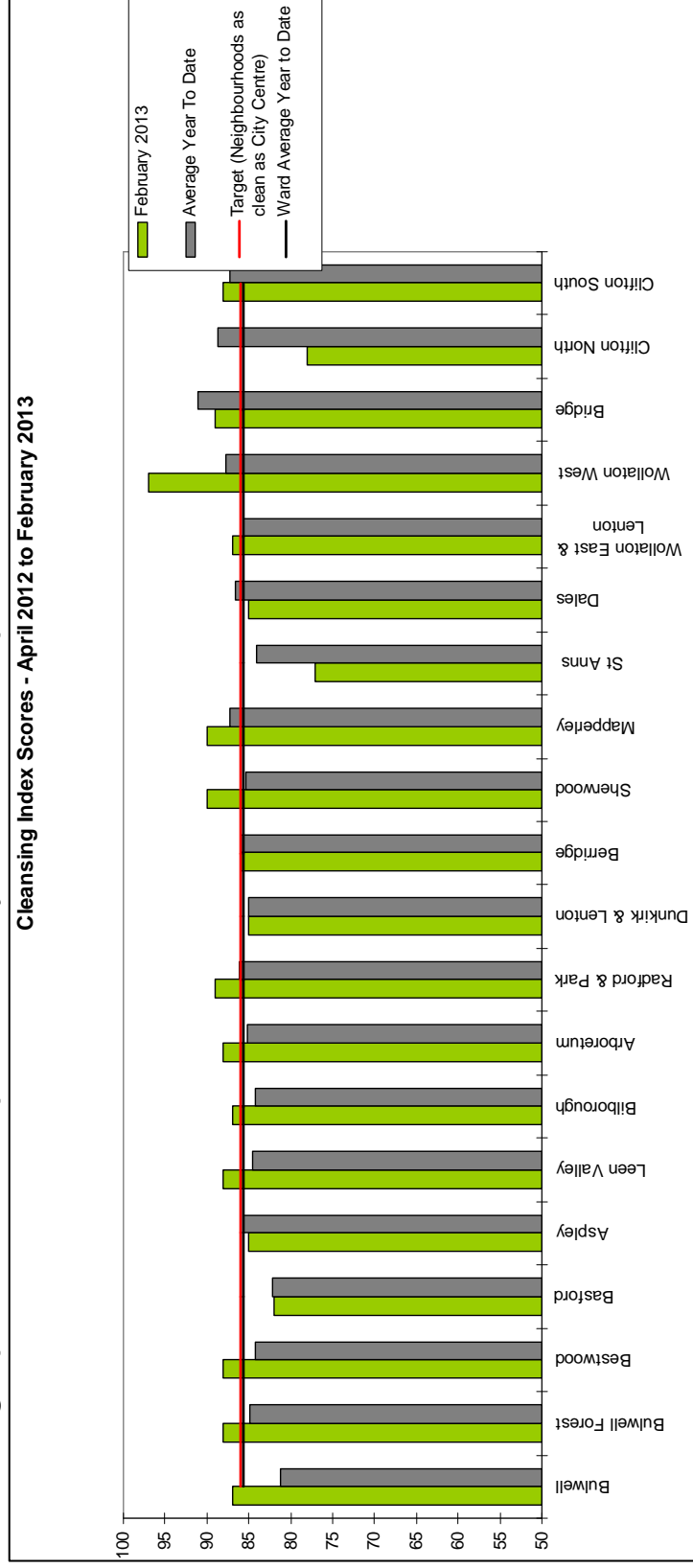
*Refers to March 2013 compared to March 2012

- The above baseline graph compares the *rolling* 12 month total of ASB in Basford to a *fixed* 12 month 2010/11 baseline. Performance on this measure continues to improve at a steady pace.
- In March 2013 there was a reduction of 42.67% (32 calls, see above right RAG rating) compared to March 2012.
- Year to date (compared to the corresponding period last year) ASB in Basford is down 40.71%.

Unofficial data

Cleanliness Index

This graph shows the position of your ward compared to other Wards



The “neighbourhood as clean as the city centre” benchmark target on cleanliness is to achieve a score of 86% in every ward. The 86% target is shown in red in the above graph.

To calculate the Cleanliness Index (CI) an agreed number of transects are surveyed across an area covering a range of land types. Each site surveyed is awarded a cleanliness grade based on a 7 point scale from A to D where Grade A: – no litter, and Grade D: - heavily littered. The maximum possible score of 100 is achieved when all sites achieve Grade A.

The Code of Practice for Litter and Refuse (COPLAR) requires councils to strive to reach an ‘acceptable’ standard of cleanliness (grade B or better) across the Council area. Grade A is the ultimate goal and is how a site should be immediately after sweeping but is almost impossible to maintain for any length of time. For example, a grade A site is completely free of litter – one cigarette butt takes it down to B+.

To achieve the manifesto commitment of Neighbourhoods as clean as the City Centre a target of 86 is required as that was the CI for the City Centre in May 2011. To give some context if all areas surveyed achieved a grade ‘B’ standard, this would equate to a cleanliness index of 67.

Cleanliness Index

Cleanliness Index
Score

82

Performance compared to
previous year

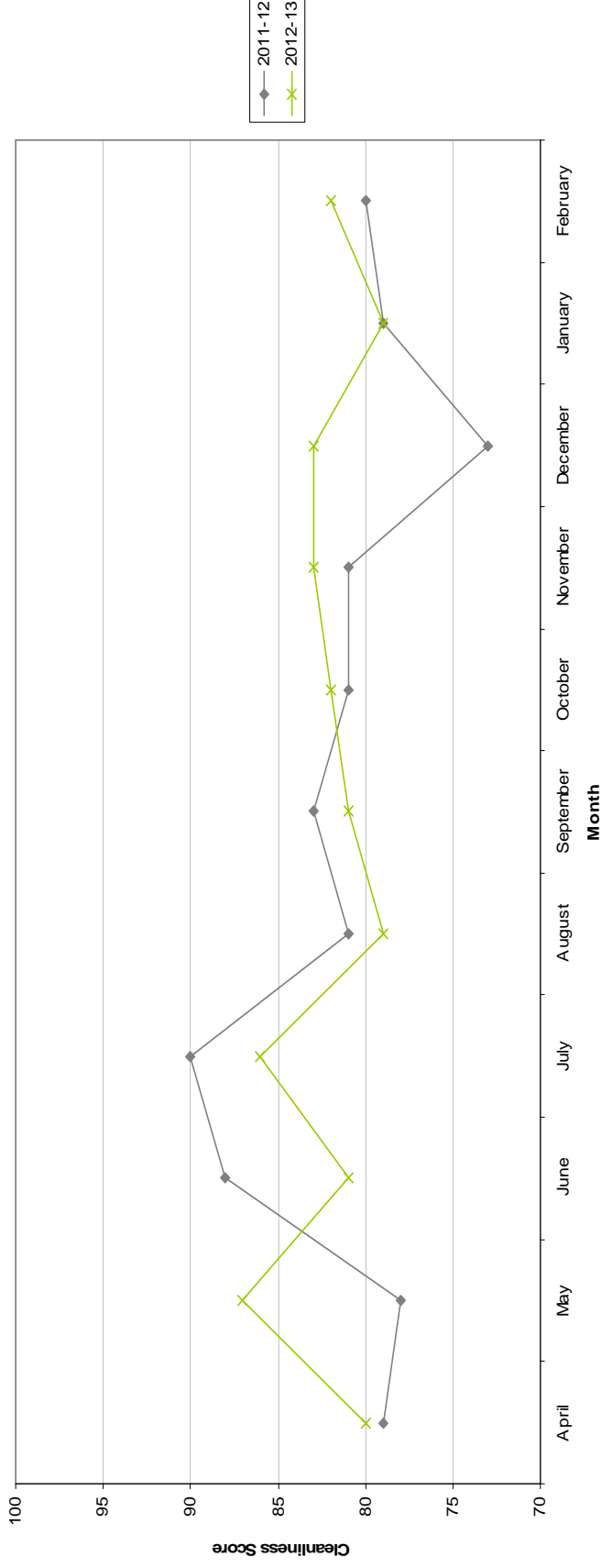


Performance compared to
neighbourhoods target
of 86



- All data refers to a comparison with the previous year's month
- It is proposed that performance over time graphs be used for each indicator
- Historic data for comparison is not available for dog fouling

Cleanliness Index - Basford

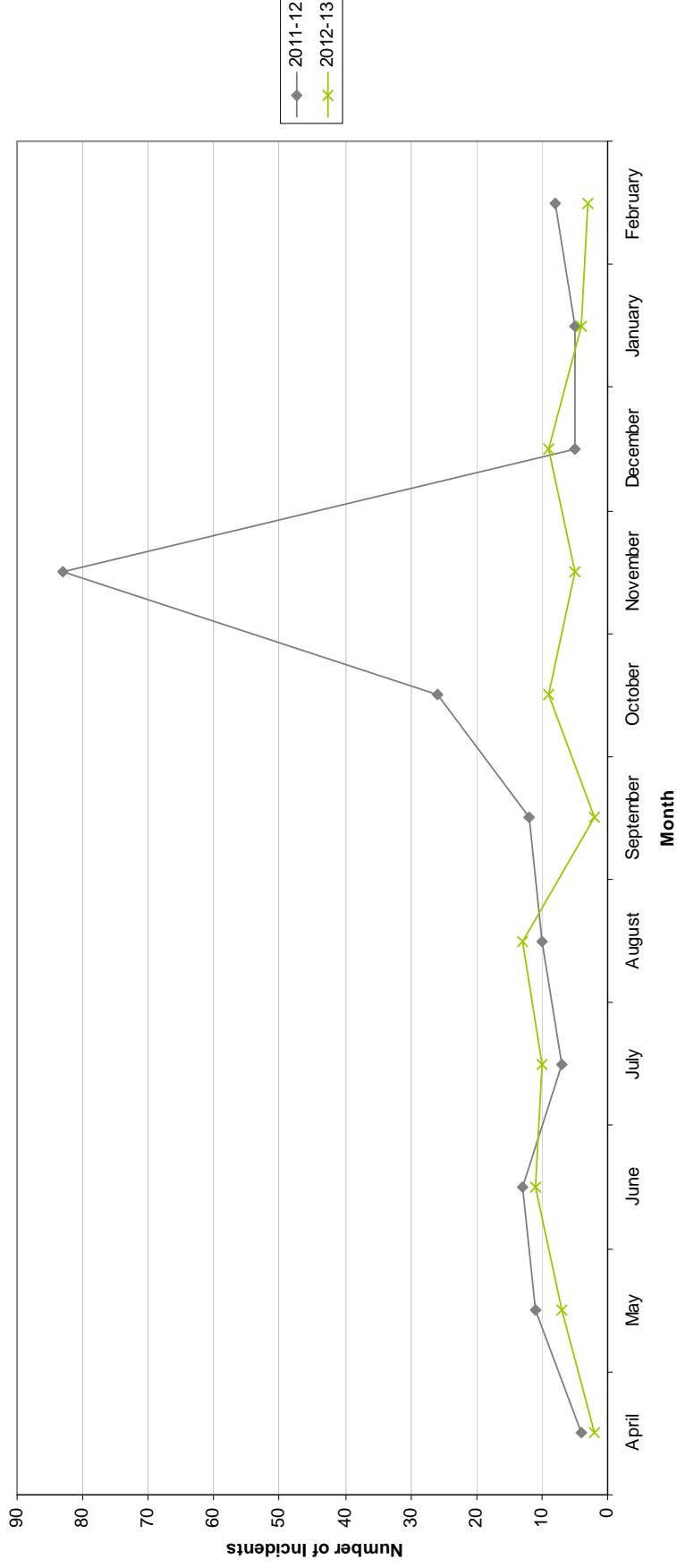


Graffiti Reports

RED	
AMBER	
GREEN	3 incidents
	Decrease of 5

- All data refers to a comparison with the previous year's month
- It is proposed that performance over time graphs be used for each indicator
- Historic data for comparison is not available for dog fouling

Incidents of Graffiti - Basford

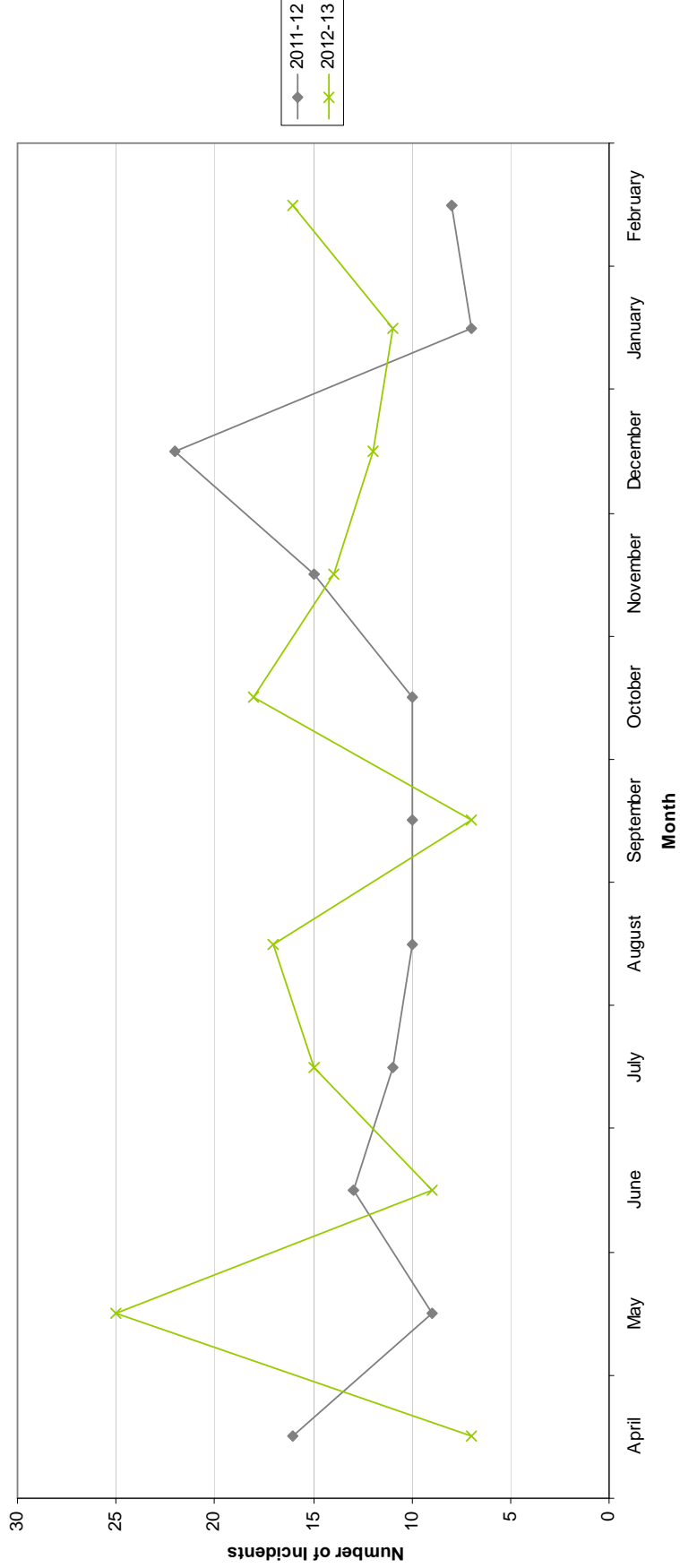


Fly Tipping

RED	16 incidents	Increase of 8
AMBER		
GREEN		

- All data refers to a comparison with the previous year's month
- It is proposed that performance over time graphs be used for each indicator
- Historic data for comparison is not available for dog fouling

Incidents of Fly Tipping - Basford



Unemployment Rate

Unemployment in City wards, February 2013

Area	Feb-13		Change in last month		Change in last year	
	Number	Rate	Number	%	Number	%
Arboretum	859	7.3	23	2.8	31	3.7
Aspley	1,230	10.9	57	4.9	-21	-1.7
Basford	737	6.6	20	2.8	-33	-4.3
Berridge	1,095	7.5	30	2.8	5	0.5
Bestwood	1,069	9.4	38	3.7	-26	-2.4
Bilborough	806	7.7	43	5.6	-17	-2.1
Bridge	687	6.6	18	2.7	-91	-11.7
Bulwell	1,114	10.2	10	0.9	29	2.7
Bulwell Forest	479	5.3	18	3.9	-42	-8.1
Clifton North	426	4.8	8	1.9	15	3.6
Clifton South	540	6.2	11	2.1	-25	-4.4
Dales	928	8	54	6.2	18	2
Dunkirk and Lenton	249	2.3	-2	-0.8	-38	-13.2
Leen Valley	367	5.3	28	8.3	-9	-2.4
Mapperley	721	6.5	-3	-0.4	-30	-4
Radford and Park	779	4.1	7	0.9	-32	-3.9
Sherwood	594	5.5	35	6.3	-40	-6.3
St Ann's	1,276	9.3	31	2.5	-12	-0.9
Wollaton East and Lenton Abbey	151	1.5	14	10.2	-2	-1.3
Wollaton West	266	2.9	15	6	17	6.8

Source: ONS claimant count February 2013 (from Nomis)

This is an edited version of a report produced by: Geoff Oxendale, Information and Research Officer, Nottingham City Council. Claimant count of Job Seekers Allowance (JSA) is used as a proxy measure for unemployment.

Wards are ranked from 1 (highest Rate, per 1000 of population, of JSA claimants) to 20 (lowest Rate).

Housing

Basford Ward - Housing



Anti-social behaviour - Bestwood (Basford Ward)

Indicator	Current Target	2010/11		2011/12		2012/13		Trend
		Value	%	Value	%	Value	%	
% of ASB cases resolved - Bestwood	97.6%	95.74%	97.09%	99.25%				↑
% of ASB cases resolved by first intervention - Bestwood	75%	-	-	77.98%				n/a

Empty properties - Basford Ward

Indicator	Current Target	2010/11		2011/12		2012/13		Trend
		Value	%	Value	%	Value	%	
Average void re-let time for Basford Ward (calendar days)	26	58.12	45.5	80.03				↓
Number of lettable voids Basford Ward	-	16	24	9				↑
Number of empty properties awaiting decommission in Basford Ward	-	8	6	10				↓

Estate star ratings (from Tenant Service Inspectors)

Indicator	2010/11		2011/12		2012/13		Trend
	Value	Status	Value	Status	Value	Status	
Estate star rating - Old Highbury Vale	3 Star	✓	3 Star	✓	3 Star	✓	→
Estate star rating - Stockhill	2 Star	✗	3 Star	✓	3 Star	✓	→
Estate star rating - Basford	2 Star	✗	3 Star	✓	3 Star	✓	→
Estate star rating - Heathfield	3 Star	✓	3 Star	✓	3 Star	✓	→

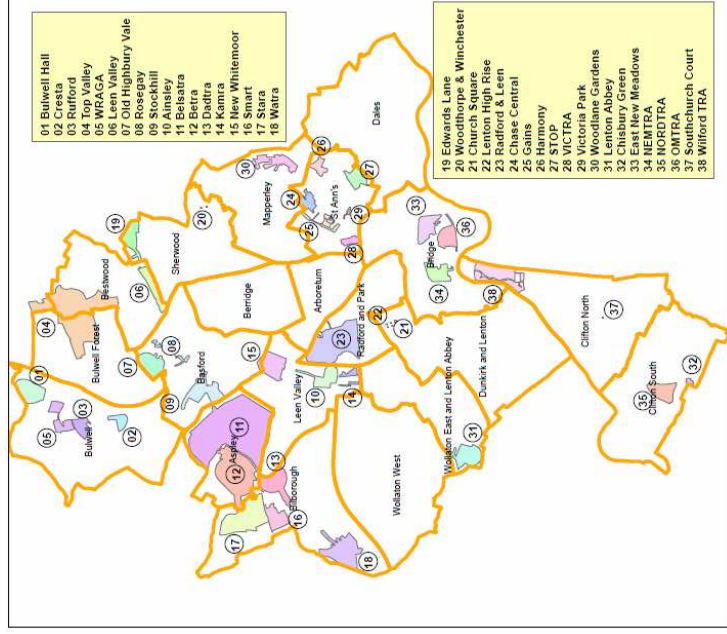
Housing

Rent collection - Bestwood

Indicator	Current Target	2010/11		2011/12		2012/13		Trend
		Value	Value	Value	Value	Status		
Rent charged that has been collected - Bestwood office area	100.2%	101.5%	101.7%	100.4%	100.4%	✓		↑

Key:

- ✓ Performance on or exceeding target
- ⬇ Performance below target
- 📊 Data only performance indicator
- ⬆ Performance has improved compared to two years ago
- ⬇ Performance has deteriorated compared to two years ago
- Performance unchanged



Housing

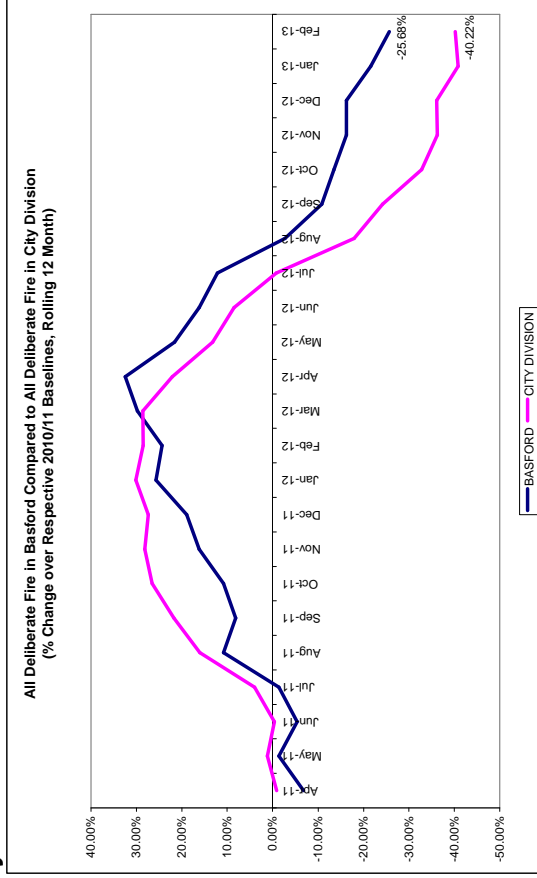
Performance indicator definitions

Performance indicator	Definition
% of ASB cases resolved	This performance indicator monitors the proportion of ASB cases that Nottingham City Homes has successfully resolved. Data for this indicator is not available by ward and is reported by Housing Office.
% of ASB cases resolved by first intervention	This performance indicator monitors how many ASB cases Nottingham City Homes resolved on the first intervention e.g. written warning. Data for this indicator is not available by ward and is reported by Housing Office.
Average void re-let time (calendar days)	This performance indicator monitors how many empty properties Nottingham City Homes has re-let and the length of time it has taken. The void period is the number of calendar days including the day after the old tenancy ends right through to and including the day before the new tenancy starts.
Number of lettable voids	This performance indicator monitors the number of empty properties which are available for re-letting. Lettable empty properties are those which will receive repair work and then be let to a new tenant.
Number of empty properties awaiting decommission	This performance indicator monitors the number of empty properties which will not be re-let and includes those being decommissioned and / or demolished.
Estate star ratings	Nottingham City Homes Tenant Inspectors monitor the condition of estates and rates them according to a zero, one, two and three star standard. The estates are monitored every three months with a selection of streets (determined by tenants) covering all 42 estates.
Rent charged that has been collected	This performance indicator measures the amount of rent collected (including tenant arrears) as a percentage of rent due for the current year. Data for this indicator is not available by ward and is reported by Housing Office.

Fire

Table: Volume of Deliberate Primary and Secondary Fires by Ward

Ward	Feb-12	Feb-13	Change	% Change	Previous YTD	YTD	Change	% Change
Arboretum	1	0	-1	-100.00%	28	14	-14	-50.00%
Aspley	1	5	4	400.00%	131	57	-74	-56.49%
Basford	3	3	0	0.00%	87	49	-38	-43.68%
Berridge	3	0	-3	-300.00%	44	38	-6	-13.64%
Bestwood	2	3	1	50.00%	105	38	-67	-63.81%
Bilborough	1	4	3	300.00%	58	40	-18	-31.03%
Bridge	5	0	-5	-500.00%	77	10	-67	-87.01%
Bulwell	5	6	1	20.00%	152	71	-81	-53.29%
Bulwell Forest	1	2	1	100.00%	119	30	-89	-74.79%
Clifton North	1	3	2	200.00%	52	14	-38	-73.08%
Clifton South	0	3	3	300.00%	72	22	-50	-69.44%
Dales	3	4	1	33.33%	33	12	-21	-63.64%
Dunkirk and Lenton	2	0	-2	-200.00%	27	5	-22	-81.48%
Leen Valley	2	2	0	0.00%	36	24	-12	-33.33%
Mapperley	1	0	-1	-100.00%	29	18	-11	-37.93%
Radford and Park	0	1	1	100.00%	53	30	-23	-43.40%
Sherwood	0	1	1	100.00%	40	14	-26	-65.00%
St. Ann's	0	2	2	200.00%	64	27	-37	-57.81%
Wollaton East and Lenton Abbey	2	0	-2	-100.00%	10	6	-4	-40.00%
Wollaton West	1	1	0	0.00%	9	3	-6	-66.67%
Total	34	40	6	17.65%	1226	522	-704	-57.42%



- The above table shows volume of deliberate (primary and secondary) fires in the 20 wards. In February 2013 there were 3 fires in Basford. These comprised 2 primary car fires and a primary dwelling fire. Year to date deliberate fires in Basford are down 43.68% (38 fires, compared to the corresponding year).
- The graph on the right shows a rolling 12 month total of deliberate fires in Basford against the fixed 2010/11 baseline. The performance of the City Division against its baseline has also been shown for comparison purposes.

Note: Where ward boundaries overlap with the City Centre fires that occurred in the City Centre have been included in the ward figures.

Methodology

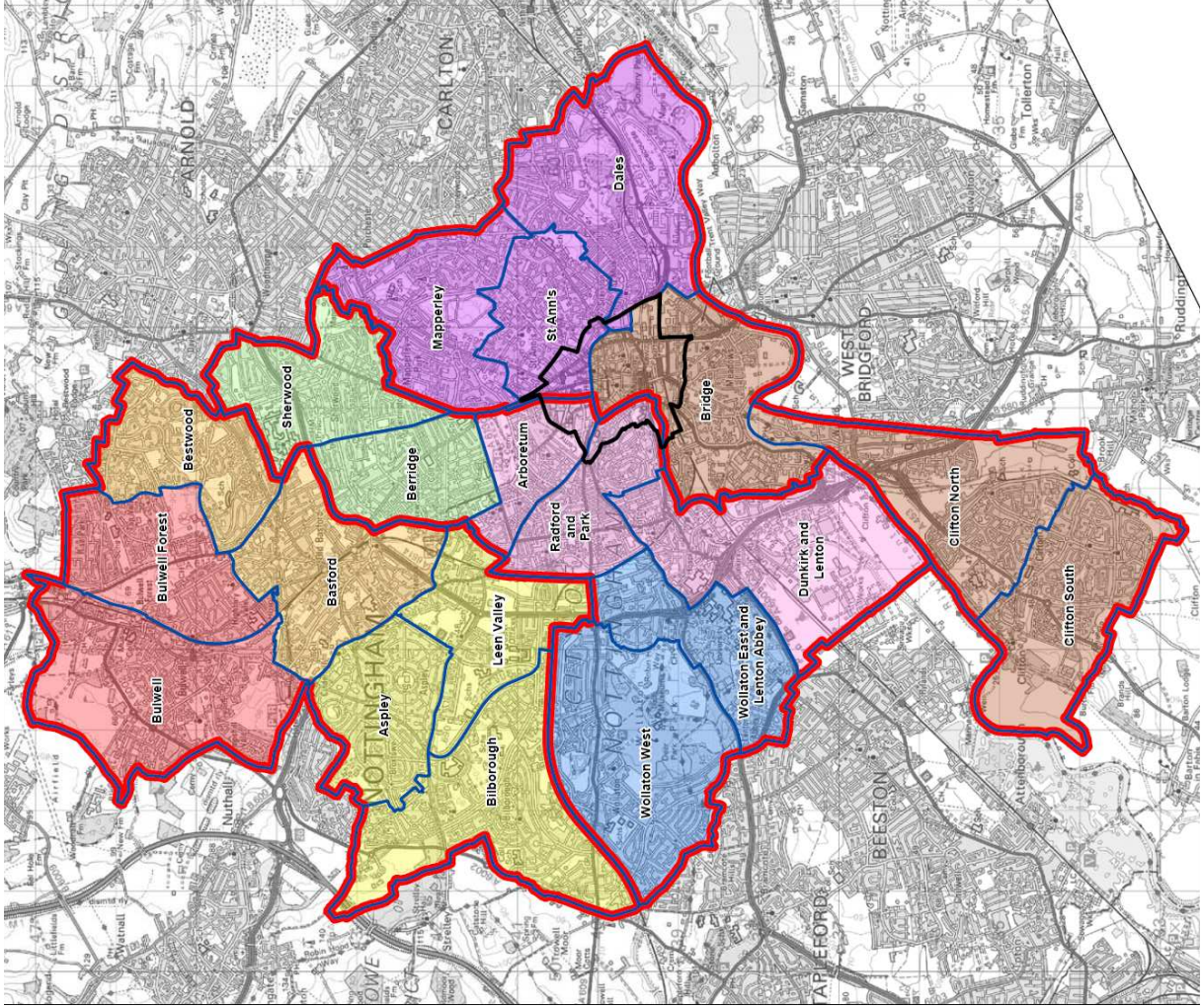
Data has not been audited or verified and therefore must only be used as a reflection of crime.

Crime data and ASB calls have been extracted from the Police systems and mapped to ascertain which Ward they occurred in.

Where a ward boundary overlaps with the City Centre, crime data and ASB calls relating to the City Centre have been removed.

Where possible the most recent data is used, although for some areas this may be a month further in arrears.

Discussions continue with other agencies regarding what further data can be included.



Bestwood

Area Committee Executive Summary

Unofficial March 2013 Data

Ward priorities

Theme	Priorities	Key Actions	Outcome (Methods of evaluation)	Lead
Safer	<ul style="list-style-type: none"> To reduce anti-social behaviour in the neighbourhood priority area. NAT to focus upon emerging hotspots, diversionary activities and nuisance neighbours. 	<p>Neighbourhood Priority: Elmbridge Shopping Area (1/11/12 – 31/1/13). NAT currently considering new neighbourhood priority area using intelligence and data.</p> <p>Priority response area – joint high visibility patrols by Neighbourhood Policing Team.</p> <p>CP to pursue action against individuals causing ASB using powers available (5 step ASB procedure).</p> <p>Jan 2013 - Family Community Team providing 6 day provision. Partners to publicise activity (schools, police etc).</p> <p>City Services to monitor debris data e.g. accumulation of alcohol containers in parks & feed into NAT.</p> <p>NAT to review new fire data regularly and respond using intelligence-led approach.</p>	<p>Prior to the priority being set there were 10 calls relating to ASB around Elmbridge (01/08/2012 to 31/10/2012) – equating to 13% of all ASB in Bestwood Park.</p> <p>Since the priority has been set (up to 17/1/13), 4 calls which equates to 8% of all ASB on Bestwood Park – 60% reduction.</p> <p>Increase in numbers of young people participating in positive activities.</p> <p>Reduction in the number of dwelling fires (baseline TBC).</p>	<p>Police & Community Protection</p> <p>Family Community Teams</p> <p>City Services</p> <p>Fire Service</p>
	<ul style="list-style-type: none"> To reduce the number of dwelling 			

	<p>and secondary fires through prevention.</p> <ul style="list-style-type: none"> ▪ To address domestic violence through prevention & support services ▪ To reduce burglary in priority area. 	<p>Secondary fires are a problem post March. NAT to review data in spring 2013 and undertake an intelligence-led approach.</p> <p>NAT to investigate other approaches in North Locality to identify where a smarter approach can be undertaken.</p> <p>Support package provided via Family Community Teams. Family Teams to provide a breakdown in the statistics of DV.</p> <p>Stronger Families delivered at the Ridge and 'Strengthening Families' through Primary and Big Wood schools.</p> <p>Family Community Teams to raise awareness of Claire's Law</p> <p>Intelligence-led approach has identified dwelling burglary (increase of 3 on YTD) and burglary other (7 more than last year) (shed) on the increase in one beat area.</p> <p>To increase high visibility patrols in area.</p> <p>Partners (NCH, street operatives etc) to act as eyes and ears.</p>	<p>Reduction in the number of secondary fires (baseline TBC).</p> <p>To reduce the number of domestic violence incidents.</p> <p>Reduction in burglary rates.</p>	<p>Fire Service</p> <p>NDO</p> <p>Family Community Teams</p> <p>Family Community Teams / Schools</p> <p>Police & Community Protection</p> <p>City Services, NCH</p>
--	--	---	---	---

Neighbourhoods	<ul style="list-style-type: none"> ▪ To reduce dog fouling – by tackling irresponsible dog owners through enforcement & prevention. ▪ To improve the visual appearance of neighbourhoods by tackling hotspot areas e.g. untidy gardens and hedges. 	<p>City Services to provide cleaning up stats to inform NAT decision on targeting 1 x dog fouling operation per month. NAT to also use intelligence from residents / TRAs / frontline officers.</p> <p>Leaflet hot spot areas with dog fouling campaign letters to encourage people to report owners who fail to clean up after their pets. Posters and removable stickers currently being produced for use in hotspots.</p> <p>Schools & partners to include campaign information in buildings and newsletters.</p> <p>To identify priority areas of need and target resources – Lytham Gardens and Leen Valley.</p> <p><u>Lytham Gardens</u> Carry out blitz day (March 2013) with partner agencies. Focus upon estate and Churchfield Plantation area.</p> <p>Develop long-term management plan for Churchfield Plantation site.</p> <p><u>Leen Valley</u> Issues with maintenance to exterior communal areas – e.g. side waste, litter, moss, pigeon excrement.</p>	<p>Increase in Fixed Penalty Notices.</p> <p>Reduction in cleaning up statistics.</p> <p>No. of reports to ASB hotline</p> <p>All</p> <p>Level of public satisfaction in neighbourhoods.</p> <p>Establish NCH estate star ratings for Lytham and Leen Valley areas.</p>	<p>City Services Community Protection</p> <p>CP</p> <p>All</p> <p>NCH, Community Protection, City Services</p> <p>Parks, Big Wood School</p> <p>NCH, City Services &</p>
----------------	--	---	---	--

	<ul style="list-style-type: none"> ▪ Review & resolve derelict, empty properties / buildings. 	<ul style="list-style-type: none"> • City Services to provide info for inclusion in letter/newsletter / posters re Bulky Waste collection • NCH to investigate long-term caretaking options. • NCH to liaise with waste management re side waste • NCH caretaking to check area every 2 weeks in interim, undertake jet washing in bin rooms and window cleaning. • NCH to consult via TRA • City Services to undertake additional litter picks in wet weather, and regular cleaning schedule of highway area (once a week) and grassed area (once every 3 week). <p>Undertake regular ward walks to identify neighbourhood issues.</p> <p><u>Big Wood Day of Action 25th April</u></p> <ul style="list-style-type: none"> • 60 yr 7 pupils to be involved in 6 ward walks across the ward. • 2 x workshops of 60 yr 7 pupils to undertake environmental activities in Churchfield Plantation <p>NDO currently making enquiries with property services over future of regeneration sites and larger disposal site. Issues with long-term maintenance e.g. fly tipping/litter accumulation in open spaces.</p> <p>Housing Patch Managers currently identifying areas of no-mans land which potentially could be re-designated for community projects. Parks currently</p>	<p>No. of lettable voids.</p>	<p>Waste Management</p> <p>All</p> <p>NDO, NCH School</p> <p>NDO</p> <p>NCH, Parks</p>
--	---	---	-------------------------------	--

		<p>looking at viability of Gainsford Crescent triangular piece of land.</p> <p>NCH looking at the longer-term arrangements for managing garage sites & smaller pieces of land.</p> <p>CP report and record empty properties to Empty Homes Officer to try and get them back into use – monitor properties to ensure they are secure reducing future issues such as fires, ASB and Broken Windows effect.</p>		<p>NCH</p> <p>Community Protection / NCH</p>
<p>Families</p>	<ul style="list-style-type: none"> ▪ More activities for young people 	<p>Development of Advisory Board into networking meeting for all providers of 0-19years. This will incorporate the work of the community and voluntary sector.</p> <p>Undertake mapping of Area 2 provision to identify specific gaps in provision e.g. disabilities / girls.</p> <p>Family Community Teams will develop a local Youth Forum to create opportunities for young people to be consulted and develop their Community.</p> <p>Big Wood Day of Action – 25th April 2013 – intergenerational work at Crossfield Court and Cherry Trees Residential Home.</p>		<p>Family Community Team</p> <p>Family Community Team</p> <p>Family Community Team</p> <p>Schools</p>
	<ul style="list-style-type: none"> ▪ Increase awareness of welfare reform 	<p>The NAT have observed an increasing no. of families requiring urgent support (no food/money).</p>	<p>Referrals to Food Bank</p> <p>Referrals to Bestwood</p>	<p>Family Community</p>

	and support services	<p>Family Community Team provide support packages to families experiencing financial crisis.</p> <p>Welfare Reform advice drop-in session offered to local resident affected by changes (March 2013).</p> <p>Promote Switch and Save service.</p>	<p>Directions Referrals to Bestwood Advice Centre</p>	<p>Team</p> <p>NDO</p> <p>All</p>
Health	<ul style="list-style-type: none"> ▪ To reduce childhood obesity 	<p>To address barriers in accessing physical activity and promotion of healthy eating. Health, Family Teams, Leisure and CVS to work together to address gaps/barriers.</p> <p>Development of an email North Locality Directory of health services (to include Leisure, Family Team, health and community/voluntary sector).</p> <p>The Transport Hub and DOBH will partner to produce a map of routes to all healthy activities in North Locality.</p> <p>TravelRight currently looking at sustainable travel and access to provision in North Locality.</p> <p>Family Teams will deliver a physical activities , and Healthy eating throughout universal provision to extend the Healthy Children's Centre Standards 0-19.</p> <p>To look at the feasibility of a cycle centre in Bestwood</p> <p>Family Community Team will deliver a physical session to include Tiny Cooks in line with the Healthy</p>	<p>Levels of childhood obesity</p>	<p>DOBH</p> <p>DOBH</p> <p>DOBH / TravelRight</p> <p>Family Community Team</p> <p>TravelRight</p>

	<ul style="list-style-type: none"> ▪ To support local volunteers & raise aspirations 	<p>Weights agenda at Leen Valley Community Centre.</p> <p>Change Makers 11 Change Maker volunteers were recruited in the last year. These are the voice for local health issues in Bestwood. Throughout June to Nov 2012 the volunteers identified lack of awareness of physical activity in the area as a main health priority which has contributed to shaping the current health priority.</p> <p>NAT will continue to support the recruitment of active members and consult on local health issues.</p> <p>Area 2 volunteers Family Community Teams support the involvement of 25 volunteers working with each of the centres.</p> <p>Bestwood Ward Community Centres – NDO to support the work of Community Centre Associations across the ward and support them to deliver activities that meet local need.</p> <p>Bestwood Community Matters – Forum of community / voluntary groups and volunteers. NAT to support linking up of volunteers and groups.</p> <p>Tenant & Residents Associations NCH to support current groups (Leen Valley) and support the formation of new (e.g Bestwood Estate). NCH, Neighbourhood Policing Team and Locality Management to attend meetings to support.</p>	<p>Levels of satisfactions in neighbourhoods.</p> <p>No. of volunteers.</p>	<p>DOBH</p> <p>Family Community Teams</p> <p>NDO</p> <p>NDO, Family Community Teams, DOBH</p> <p>NCH</p>
--	--	--	---	--

Working	<ul style="list-style-type: none"> ▪ To raise awareness of job opportunities and provide support to get people into employment. 	<p>NAT to promote citywide initiatives which include:</p> <ol style="list-style-type: none"> 1) Nottingham Jobs Fund 2) Employer Hub 3) Apprenticeship Hub 4) Local Community Jobs fairs <p>Bestwood Directions provide training and job opportunities through Work Clubs run in conjunction with colleges. Bestwood Directions focussing upon families with need to get back into work.</p> <p>Big Wood Year 9 Careers Day – raising aspirations. To raise awareness of employment opportunities including local recruiters through workshops, motivational speakers and a market place. 25th April. NCH, NCC to support.</p> <p>As part of Careers Day – Fire Service to provide ‘Team Challenges’.</p> <p>Big Wood Yr10 Moving Forward Day (2nd July) – similar to above, but with more detailed pathways to work. NCC and NCH to support.</p> <p>NCH, Families Community Team to provide work shadowing / work experience opportunities for Big Wood pupils.</p>	<p>To contribute to citywide targets</p> <p>Reduction in unemployment.</p>	<p>Economic Development</p> <p>Bestwood Directions Schools, Economic Development, NCH</p> <p>Fire Schools, Economic Development</p> <p>Schools, NCH & Family Community Teams</p>
---------	---	--	--	--

Community Engagement

Events Delivered

Event	Lead Partners	Date/Time	Venue
Bestwood Estate Community Association AGM	Bestwood Estate Community Association	29 th January 2013, 6pm	Bestwood Estate CC
Have a go day – Southglade Multi-Games Use Area	NCC	19 th February 2013, 11-3pm	Southglade Park Multi-Use Games Area
Bestwood Community Matters	Bestwood Park Church, NCC	13 th March, 6.30-8pm	Southglade Access Centre
Welfare Reform Advice Session	NCC & NCH	19 th March, 2.00-6pm	Bestwood Park Church
Bestwood Estate Community Association – Red Nose Event	Bestwood Estate Community Association	20 th March 2013	Bestwood Estate Community Centre
Leen Valley – Easter Parade	Leen Valley Community Association	30 th March 2013	Leen Valley Community Centre
Southglade Park Leisure Centre – 10 years anniversary	NCC	10 th April, 12-4pm	Southglade Leisure Centre
Bestwood Day of Action	NCC, Big Wood School, NCH, Police, Fire Service	25 th April 2013	Ward-wide

Future Events and Activities Planned

Event	Lead Partners	Date/Time	Venue
Development of Bestwood Estate Tenants & Residents Association	NCH and Bestwood Community Centre	TBC	
Bestwood Estate 75 th Anniversary Fun Day	Bestwood Estate Community Centre	TBC	
Park Live	Southglade Park Officers Group	25 th July, 12-4pm	Southglade Park
Leen Valley Summer Fair	Leen Valley Community Association	27 th July, 11-3pm	Leen Valley Community Centre
Bestwood Estate Summer Fair	Bestwood Community Association	3 rd Aug, 12-4pm	Bestwood Estate Community Centre

Community Engagement

Ward Walks

Area/Estate	Date/Time	Meeting Place
Big Wood Day of Action 6 Ward Walks	25 th April 2013 9.15 / 1pm	Covering Top Valley, Leen Valley, Bestwood Park

Community Meetings

Event	Date	Venue
Bestwood Estate CA	20 th May at 10am	Bestwood Estate CC
Leen Valley CA	Every 4 th Tuesday at 6pm	Leen Valley CC
Leen Valley TRA	Every 3 rd Weds at 6pm	Leen Valley CC
Bestwood Change Maker Volunteer Meetings	Every 3 rd Thursday of the Month 12.30pm – 2.30pm.	Southglade Access Centre

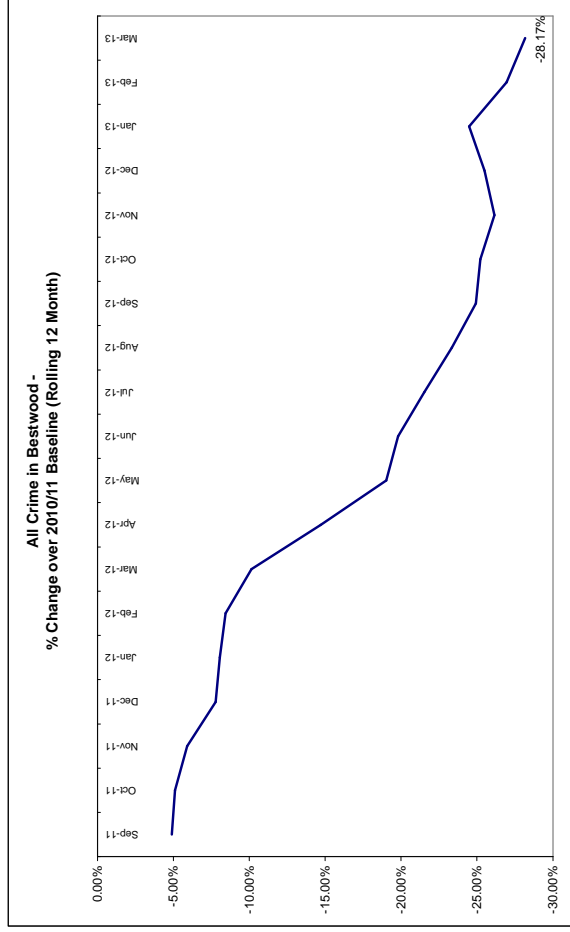
Finance

Ward Councillor Budgets	
Total Amount allocated this period	£5,750
De-committed this period	£3,400
Budget Remaining unallocated (inc. of 2012-13 allocation)	£28,066

Area Capital Fund	
Total Amount allocated this period	£0
De-committed this period	£0
Budget Remaining unallocated (inc. of 2012-13 allocation)	£24,962

Others – Section 106, NCH Environmentals	
None this period	

Crime

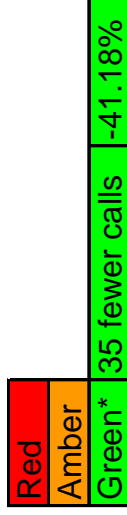
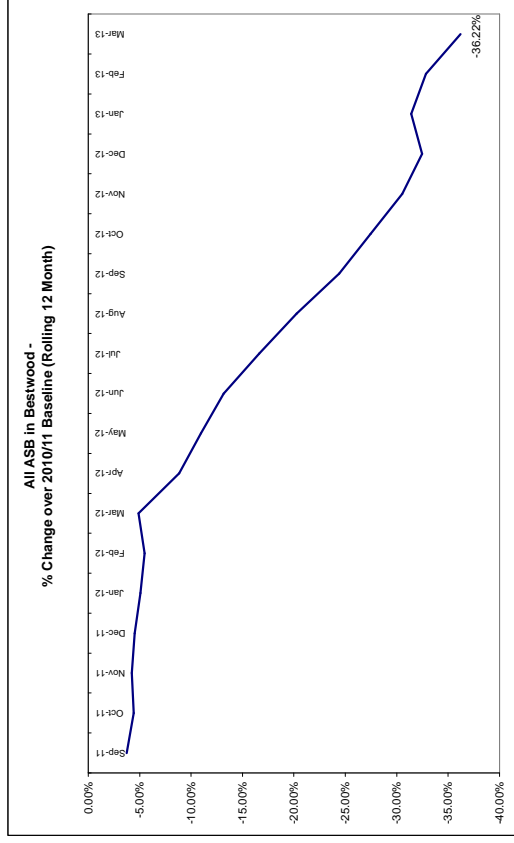


*Refers to March 2013 compared to March 2012

- The above baseline graph compares the *rolling* 12 month total of crime in Bestwood to a *fixed* 12 month 2010/11 baseline. The graph shows that the current 12 month total is showing a reduction of 28.17% against the baseline.
- In March 2013 there was a reduction of 17.17% (17 crimes, see above RAG rating) compared to March 2012.
- Year to date (compared to the corresponding period last year) all crime in Bestwood is down 20.05%.

Unofficial data

All ASB



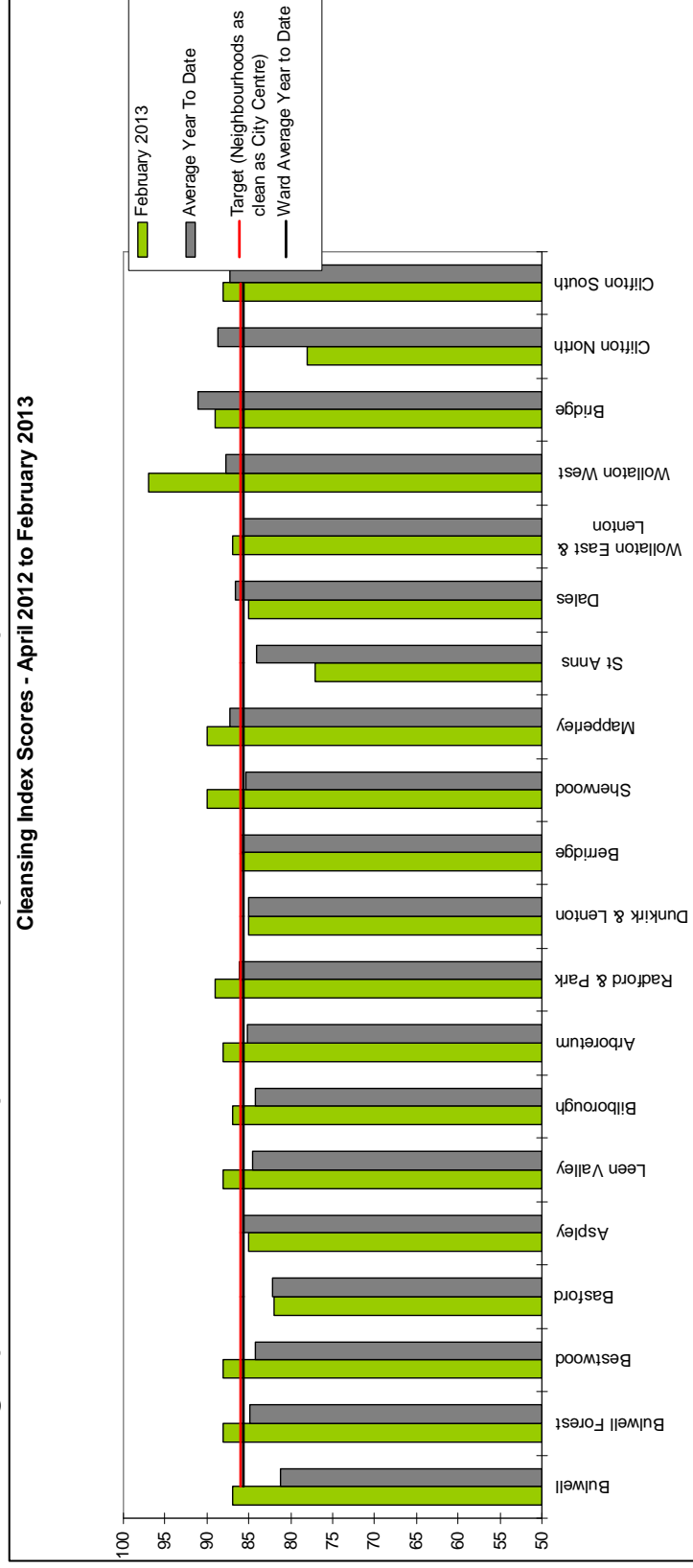
*Refers to March 2013 compared to March 2012

- The above baseline graph compares the *rolling* 12 month total of ASB in Bestwood to a *fixed* 12 month 2010/11 baseline. Performance on this measure continues to improve at a steady pace.
- In March 2013 there were a reduction in calls in Bestwood ward of 41.18% (35 calls, see above right RAG rating) compared to March 2012.
- Year to date (compared to the corresponding period last year) ASB in Bestwood is down 32.93%.

Unofficial data

Cleanliness Index

This graph shows the position of your ward compared to other Wards



The “neighbourhood as clean as the city centre” benchmark target on cleanliness is to achieve a score of 86% in every ward. The 86% target is shown in red in the above graph.

To calculate the Cleanliness Index (CI) an agreed number of transects are surveyed across an area covering a range of land types. Each site surveyed is awarded a cleanliness grade based on a 7 point scale from A to D where Grade A: – no litter, and Grade D: - heavily littered. The maximum possible score of 100 is achieved when all sites achieve Grade A.

The Code of Practice for Litter and Refuse (COPLAR) requires councils to strive to reach an ‘acceptable’ standard of cleanliness (grade B or better) across the Council area. Grade A is the ultimate goal and is how a site should be immediately after sweeping but is almost impossible to maintain for any length of time. For example, a grade A site is completely free of litter – one cigarette butt takes it down to B+.

To achieve the manifesto commitment of Neighbourhoods as clean as the City Centre a target of 86 is required as that was the CI for the City Centre in May 2011. To give some context if all areas surveyed achieved a grade ‘B’ standard, this would equate to a cleanliness index of 67.

Cleanliness Index

Cleanliness Index
Score

88

Performance compared to
previous year

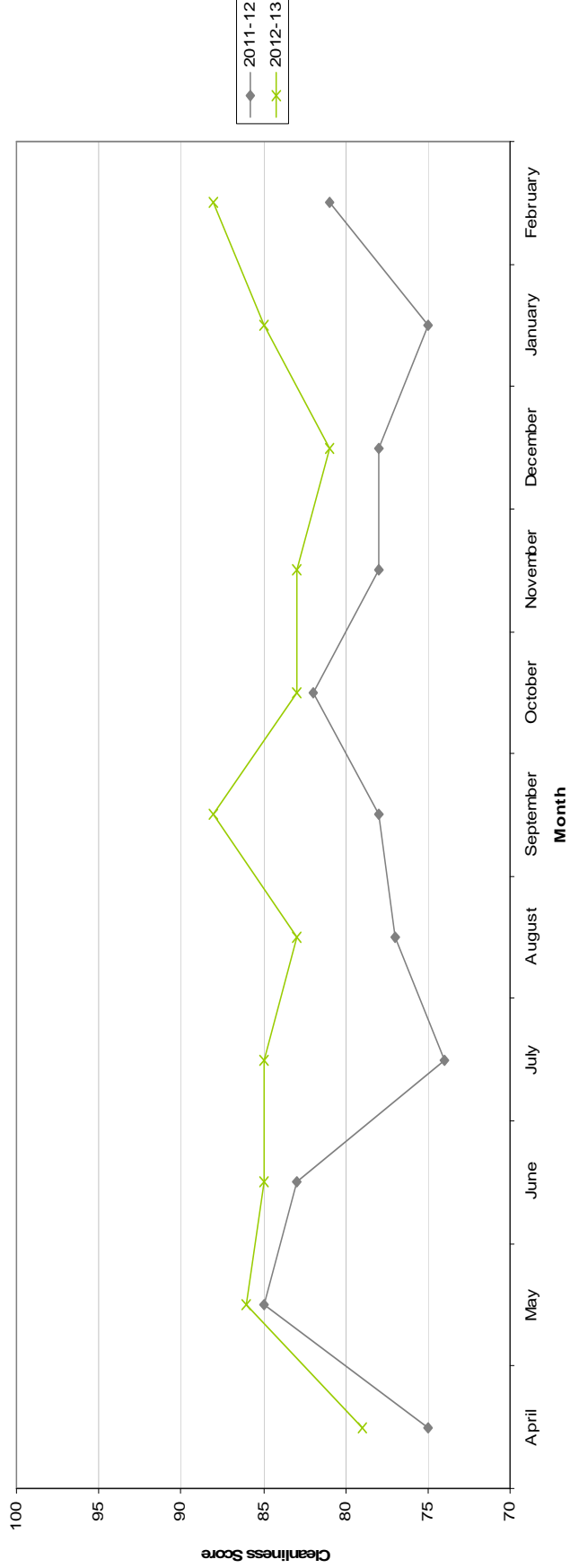


Performance compared to
neighbourhoods target
of 86



- All data refers to a comparison with the previous year's month
- It is proposed that performance over time graphs be used for each indicator
- Historic data for comparison is not available for dog fouling

Cleanliness Index - Bestwood



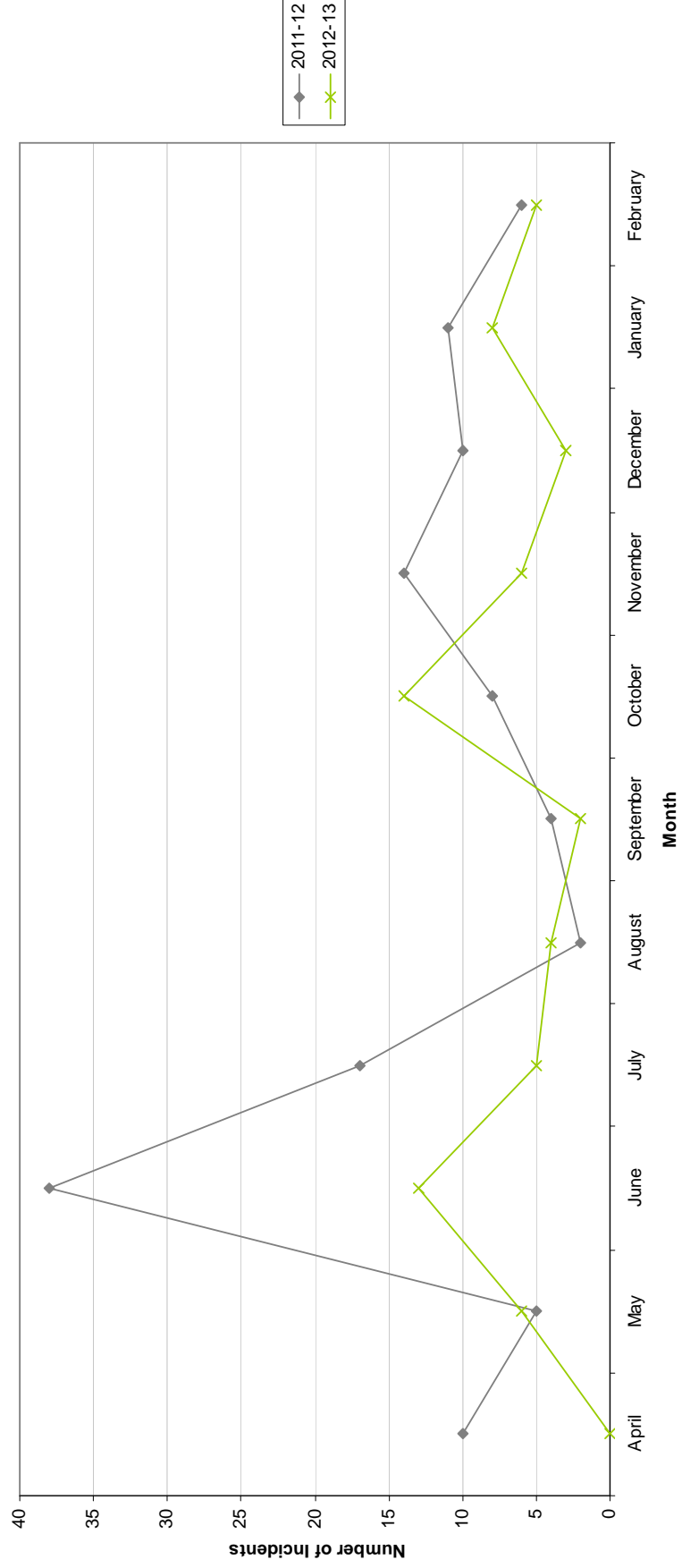
Graffiti Reports

RED
AMBER
GREEN

5 incidents
Decrease of 1

- All data refers to a comparison with the previous year's month
- It is proposed that performance over time graphs be used for each indicator
- Historic data for comparison is not available for dog fouling

Incidents of Graffiti - Bestwood

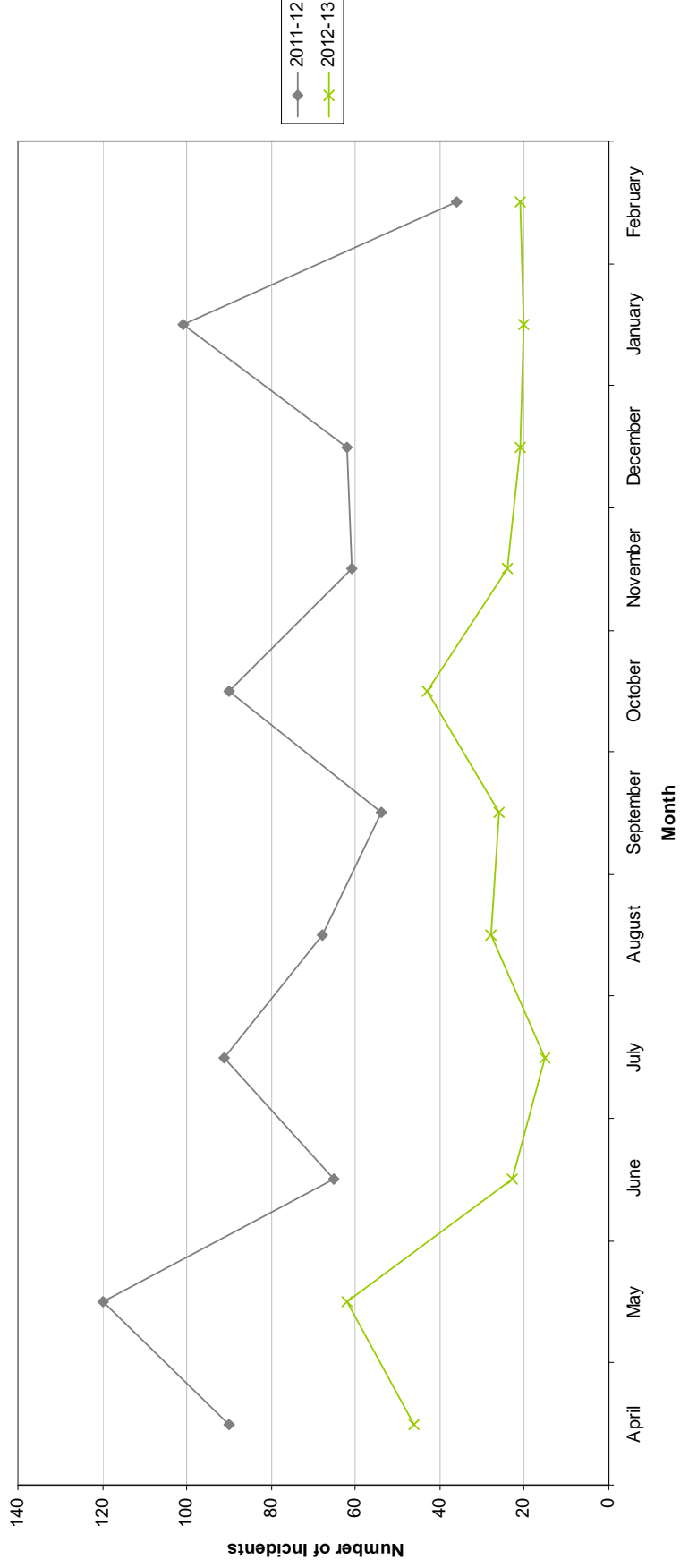


Fly Tipping

RED	
AMBE	
GREEN	21 incidents
	Decrease of 15

- All data refers to a comparison with the previous year's month
- It is proposed that performance over time graphs be used for each indicator
- Historic data for comparison is not available for dog fouling

Incidents of Fly Tipping - Bestwood



Unemployment Rate

Unemployment in City wards, February 2013

Area	Feb-13		City Rank		Change in last month		Change in last year	
	Number	Rate	Rank	%	Number	%	Number	%
Atboretum	859	7.3	8	2.8	23	2.8	31	3.7
Aspley	1,230	10.9	1	4.9	57	4.9	-21	-1.7
Basford	737	6.6	9	2.8	20	2.8	-33	-4.3
Berridge	1,095	7.5	7	2.8	30	2.8	5	0.5
Bestwood	1,069	9.4	3	3.7	38	3.7	-26	-2.4
Bilborough	806	7.7	6	5.6	43	5.6	-17	-2.1
Bridge	687	6.6	9	2.7	18	2.7	-91	-11.7
Bulwell	1,114	10.2	2	0.9	10	0.9	29	2.7
Bulwell Forest	479	5.3	14	3.9	18	3.9	-42	-8.1
Clifton North	426	4.8	16	1.9	8	1.9	15	3.6
Clifton South	540	6.2	12	2.1	11	2.1	-25	-4.4
Dales	928	8	5	6.2	54	6.2	18	2
Dunkirk and Lenton	249	2.3	19	-2	-2	-0.8	-38	-13.2
Leen Valley	367	5.3	14	8.3	28	8.3	-9	-2.4
Mapperley	721	6.5	11	-3	-3	-0.4	-30	-4
Radford and Park	779	4.1	17	0.9	7	0.9	-32	-3.9
Sherwood	594	5.5	13	6.3	35	6.3	-40	-6.3
St Ann's	1,276	9.3	4	2.5	31	2.5	-12	-0.9
Wollaton East and Lenton Abbey	151	1.5	20	10.2	14	10.2	-2	-1.3
Wollaton West	266	2.9	18	6	15	6	17	6.8

Source: ONS claimant count February 2013 (from Nomis)

This is an edited version of a report produced by: Geoff Oxendale, Information and Research Officer, Nottingham City Council. Claimant count of Job Seekers Allowance (JSA) is used as a proxy measure for unemployment.

Wards are ranked from 1 (highest Rate, per 1000 of population, of JSA claimants) to 20 (lowest Rate).

Housing

Bestwood Ward - Housing



Anti-social behaviour - Bestwood (Bestwood Ward)

Indicator	Current Target	2010/11		2011/12		2012/13		Trend
		Value	%	Value	%	Value	%	
% of ASB cases resolved - Bestwood	97.6%	95.74%	97.09%	97.09%	99.25%			
% of ASB cases resolved by first intervention - Bestwood	75%	-	-	-	77.98%			n/a

Empty properties - Bestwood Ward

Indicator	Current Target	2010/11		2011/12		2012/13		Trend
		Value	%	Value	%	Value	%	
Average void re-let time for Bestwood Ward (calendar days)	26	22.71	25.27	25.27	28.74			
Number of lettable voids Bestwood Ward	-	34	40	40	34			
Number of empty properties awaiting decommission in Bestwood Ward	-	0	3	3	1			

Estate star ratings (from Tenant Service Inspectors)

Indicator	2010/11		2011/12		2012/13		Trend
	Value	Status	Value	Status	Value	Status	
Estate star rating - Top Valley	2 Star		3 Star		3 Star		
Estate star rating - Bestwood	2 Star		3 Star		3 Star		
Estate star rating - Bestwood Park	3 Star		3 Star		3 Star		

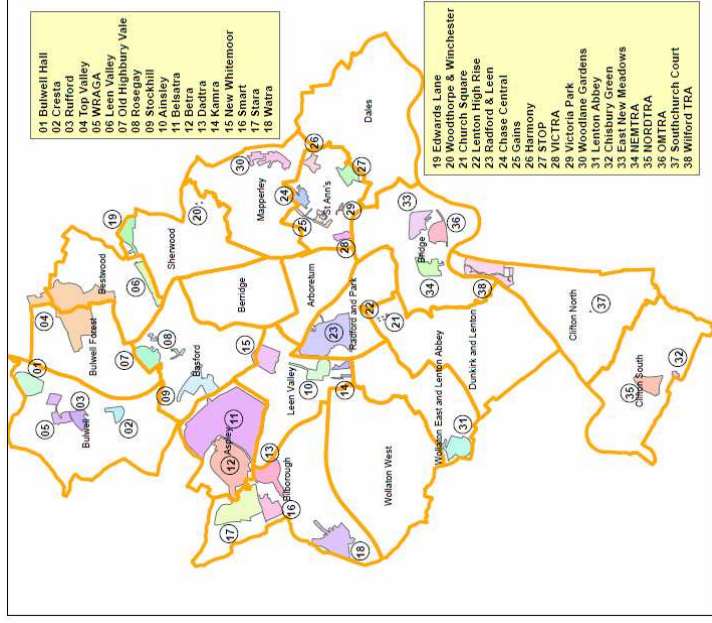
Housing

Rent collection - Bestwood

Indicator	Current Target	2010/11		2011/12		2012/13	
		Value	Value	Value	Value	Status	Trend
Rent charged that has been collected - Bestwood office area	100.2%	101.5%	101.7%	100.4%			

Key:

- Performance on or exceeding target
- Performance below target
- Data only performance indicator
- Performance has improved compared to two years ago
- Performance has deteriorated compared to two years ago
- Performance unchanged



Housing

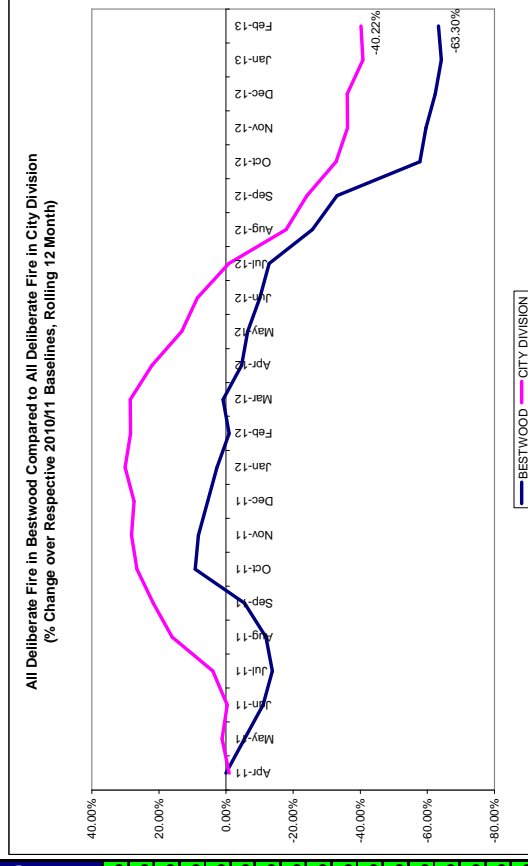
Performance indicator definitions

Performance indicator	Definition
% of ASB cases resolved	This performance indicator monitors the proportion of ASB cases that Nottingham City Homes has successfully resolved. Data for this indicator is not available by ward and is reported by Housing Office.
% of ASB cases resolved by first intervention	This performance indicator monitors how many ASB cases Nottingham City Homes resolved on the first intervention e.g. written warning. Data for this indicator is not available by ward and is reported by Housing Office.
Average void re-let time (calendar days)	This performance indicator monitors how many empty properties Nottingham City Homes has re-let and the length of time it has taken. The void period is the number of calendar days including the day after the old tenancy ends right through to and including the day before the new tenancy starts.
Number of lettable voids	This performance indicator monitors the number of empty properties which are available for re-letting. Lettable empty properties are those which will receive repair work and then be let to a new tenant.
Number of empty properties awaiting decommission	This performance indicator monitors the number of empty properties which will not be re-let and includes those being decommissioned and / or demolished.
Estate star ratings	Nottingham City Homes Tenant Inspectors monitor the condition of estates and rates them according to a zero, one, two and three star standard. The estates are monitored every three months with a selection of streets (determined by tenants) covering all 42 estates.
Rent charged that has been collected	This performance indicator measures the amount of rent collected (including tenant arrears) as a percentage of rent due for the current year. Data for this indicator is not available by ward and is reported by Housing Office.

Fire

Table: Volume of Deliberate Primary and Secondary Fires by Ward

Ward	Feb-12	Feb-13	Change	% Change	Previous YTD	YTD	Change	% Change
Arboretum	1	0	-1	-100.00%	28	14	-14	-50.00%
Aspley	1	5	4	400.00%	131	57	-74	-56.49%
Basford	3	3	0	0.00%	87	49	-38	-43.68%
Berridge	3	0	-3	-300.00%	44	38	-6	-13.64%
Bestwood	2	3	1	50.00%	105	38	-67	-63.81%
Bilborough	1	4	3	300.00%	58	40	-18	-31.03%
Bridge	5	0	-5	-500.00%	77	10	-67	-87.01%
Bulwell	5	6	1	20.00%	152	71	-81	-53.29%
Bulwell Forest	1	2	1	100.00%	119	30	-89	-74.79%
Clifton North	1	3	2	200.00%	52	14	-38	-73.08%
Clifton South	0	3	3	300.00%	72	22	-50	-69.44%
Dales	3	4	1	33.33%	33	12	-21	-63.64%
Dunkirk and Lenton	2	0	-2	-200.00%	27	5	-22	-81.48%
Leen Valley	2	2	0	0.00%	36	24	-12	-33.33%
Mapperley	1	0	-1	-100.00%	29	18	-11	-37.93%
Radford and Park	0	1	1	100.00%	53	30	-23	-43.40%
Sherwood	0	1	1	100.00%	40	14	-26	-65.00%
St. Ann's	0	2	2	200.00%	64	27	-37	-57.81%
Wollaton East and Lenton Abbey	2	0	-2	-100.00%	10	6	-4	-40.00%
Wollaton West	1	1	0	0.00%	9	3	-6	-66.67%
Total	34	40	6	17.65%	1226	522	-704	-57.42%



•The above table shows volume of deliberate (primary and secondary) fires in the 20 wards. In February 2013 there were 3 fires in Bestwood. These comprised 3 secondary refuse fires involving a wheelie bin, loose refuse and a rubbish container. Year to date deliberate fires in Bestwood are down 63.81% (67 fires, compared to the corresponding year).

•The graph on the right shows a rolling 12 month total of deliberate fires in Bestwood against the fixed 2010/11 baseline. The performance of the City Division against its baseline has also been shown for comparison purposes.

Note: Where ward boundaries overlap with the City Centre fires that occurred in the City Centre have been included in the ward figures.

Methodology

Data has not been audited or verified and therefore must only be used as a reflection of crime.

Crime data and ASB calls have been extracted from the Police systems and mapped to ascertain which Ward they occurred in.

Where a ward boundary overlaps with the City Centre, crime data and ASB calls relating to the City Centre have been removed.

Where possible the most recent data is used, although for some areas this may be a month further in arrears.

Discussions continue with other agencies regarding what further data can be included.